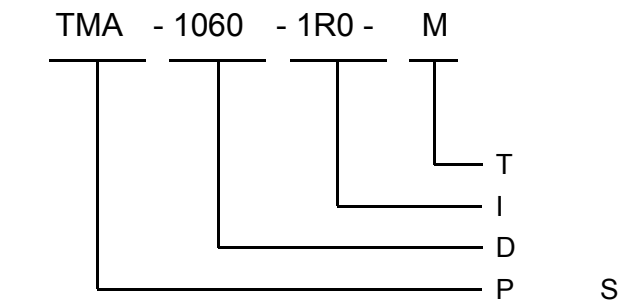


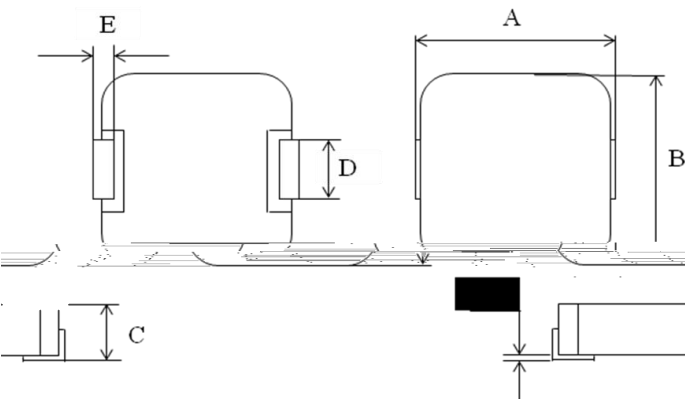
	A0	I TMA -1060-R68-M	2018/03/06	H	Roger

- L
- L DCR
- H
- H (I)
- R HS H F
- L EMI

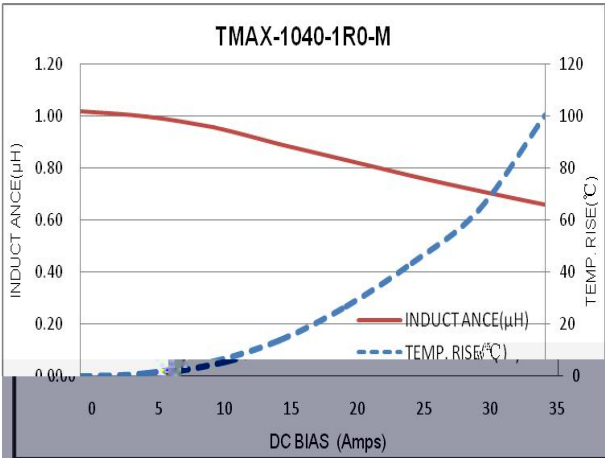
- V R M
- DC/DC
- T -
- G
- L PC
- SSD



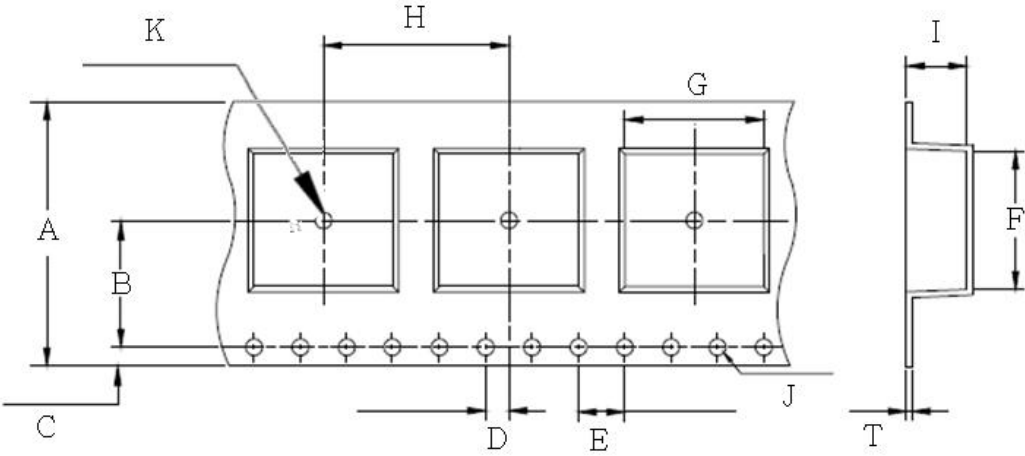
M= 20%
1R0=1.0 H



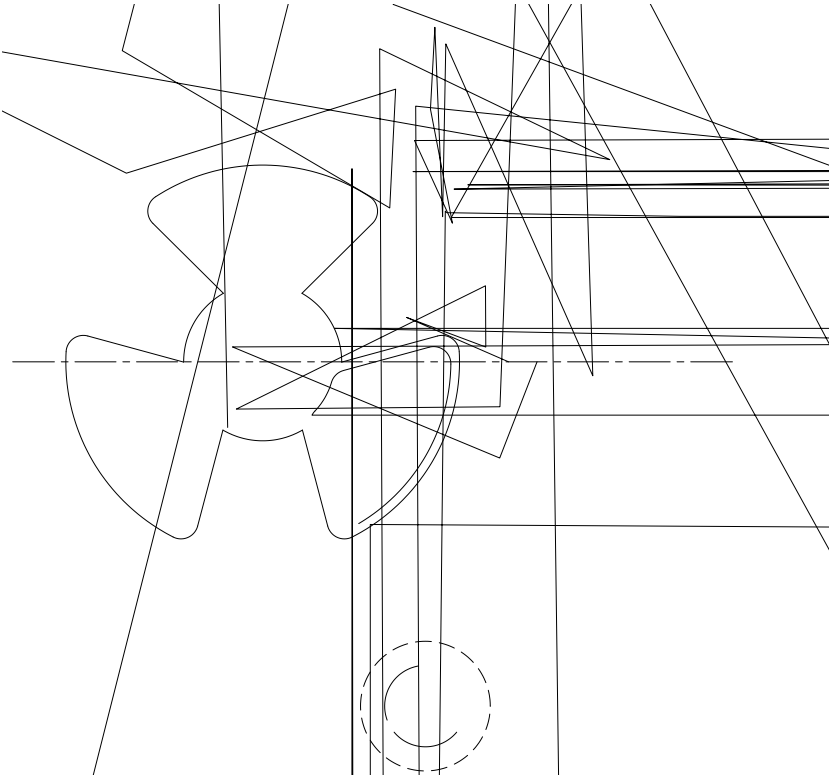
A	
B	
C	
D	
E	
F	



S : T
1.P : 160 ± 10 C 90
2.R : 245 ± 5 °C 2 ± 95%
0.5
1.V IUT :
(10H 55H 10H) 60
0
V

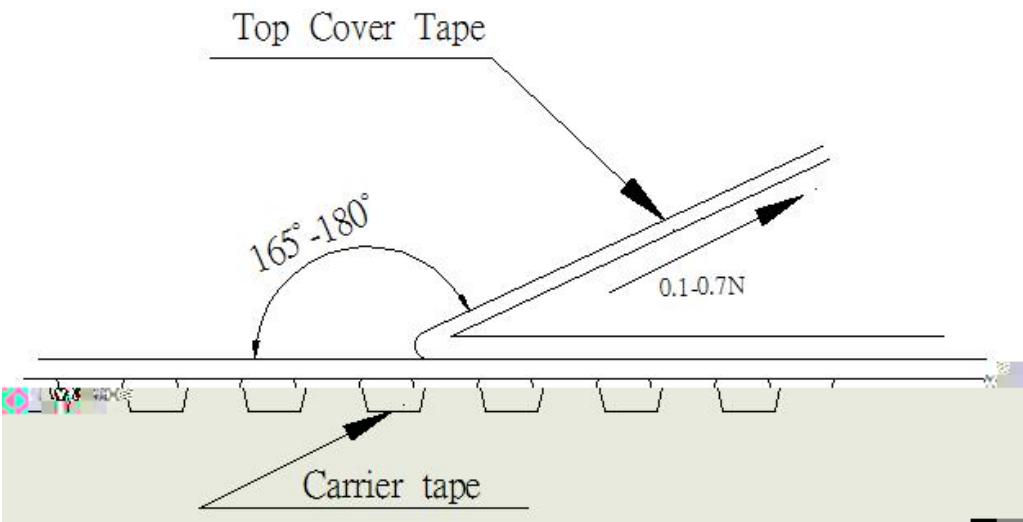


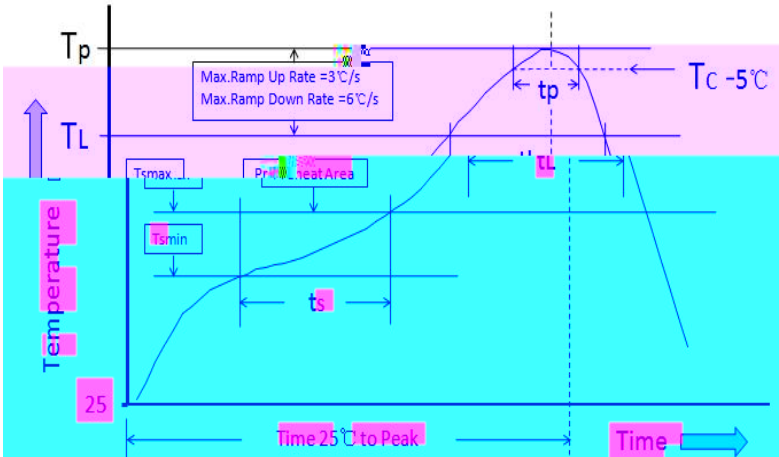
G	F	I	T	H	A
10.7 ± 0.1	12.0 ± 0.1	6.5 ± 0.1	0.35 ± 0.05	16.0 ± 0.1	24.0 ± 0.3
J	K	D	E	B	C
1.50 ± 0.1	1.50 ± 0.1	2.0 ± 0.1	4.0 ± 0.1	11.5 ± 0.1	1.75 ± 0.1



A	B	C
24.5 ± 0.2	2.0 ± 0.2	B

- T 300 / .
- T 0.1 0.7 N.





	<	≥
< 2.5	235°C	220°C
≥ 2.5	220°C	220°C

	<		
< 1.6	260°C	260°C	260°C
1.6-2.5	260°C	250°C	245°C
> 2.5	250°C	245°C	245°C

P	S	T (T)	100°C	150°C
		T (T)	150°C	200°C
		T ():T T	60-120 S	60-120 S
A	TL T		3°C/S M	3°C/S M
L	(TL)		183°C	183°C
T	(L)		60-150 S	60-150 S
P	(T)*		T 1	T 2
T	()** 5 °C (T)		20 **	30 **
A	- T TL		6°C/S M	6°C/S M
T	25°C P T		6 M M	8 M M

*T (T)

** T ()

● 500 /

- T
- L

✓ P	N .	✓ C	N
✓ D		✓ C	P N .
✓ Q		✓ M	P N .
✓ P	N .	✓ M	N
✓ T	N .	✓ M	C

➤ : T 25 35 C, H 45 75% RH

➤ :
✓ M T : -55 C A .
✓ M T : +125 C T

✓ T -55 C +125 C .
✓ H , UL.


➤ : W
,
.

➤ : I
(, .).


▶ P A C
T

, - , . T ,

,

 T R
 T
 . I

•

 D S
 D

•

W
T

I **P**

:

. P .

 D

P

■

■

 N
T

,

(, ,) ..TDG H C .,L .

1

1

•